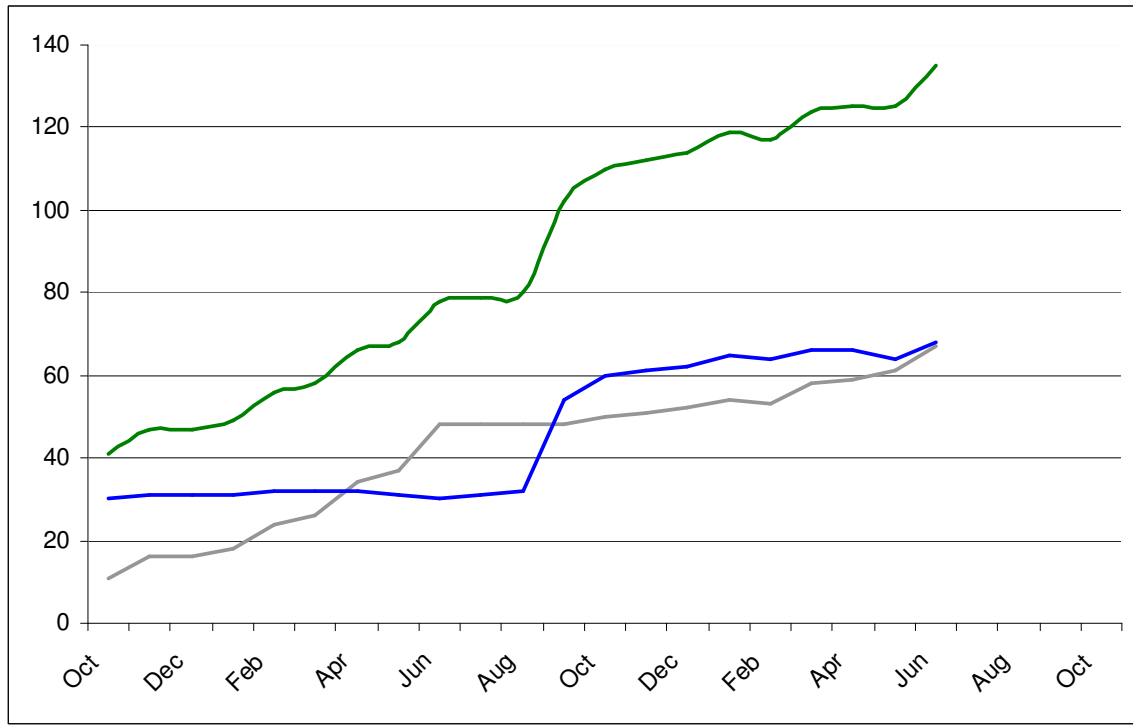
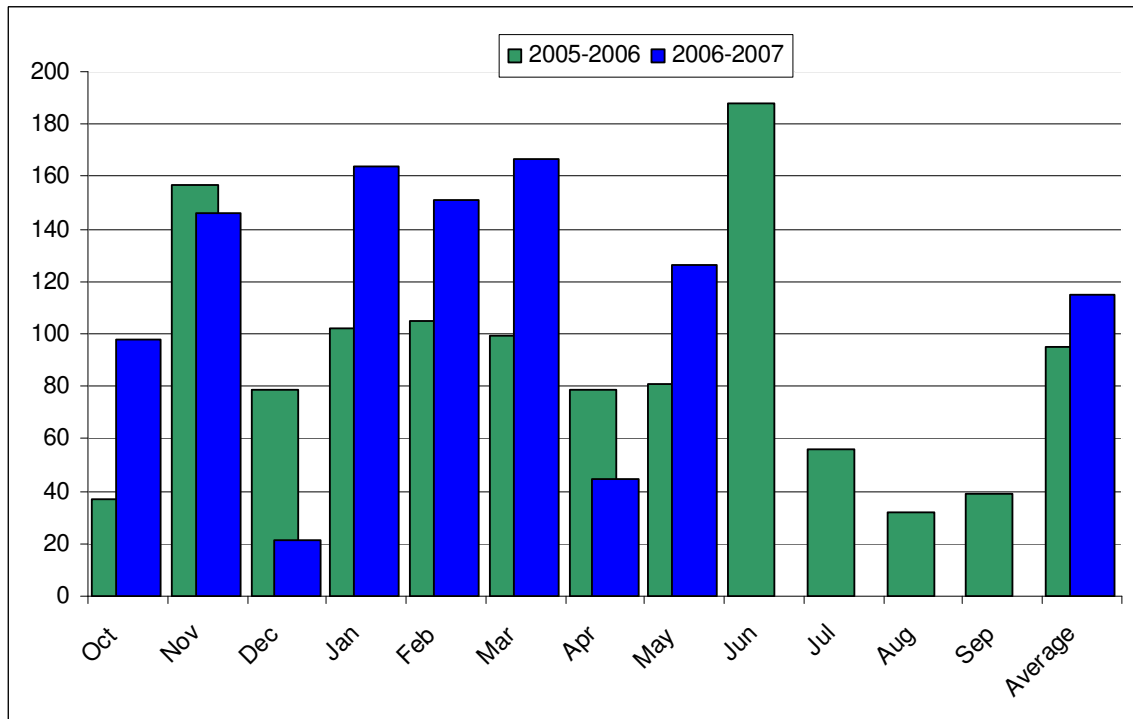


## Information about ERAQRA

Current membership: 135. The graph below shows total membership over time from October 2005 (grey = forum membership, blue = non-forum)

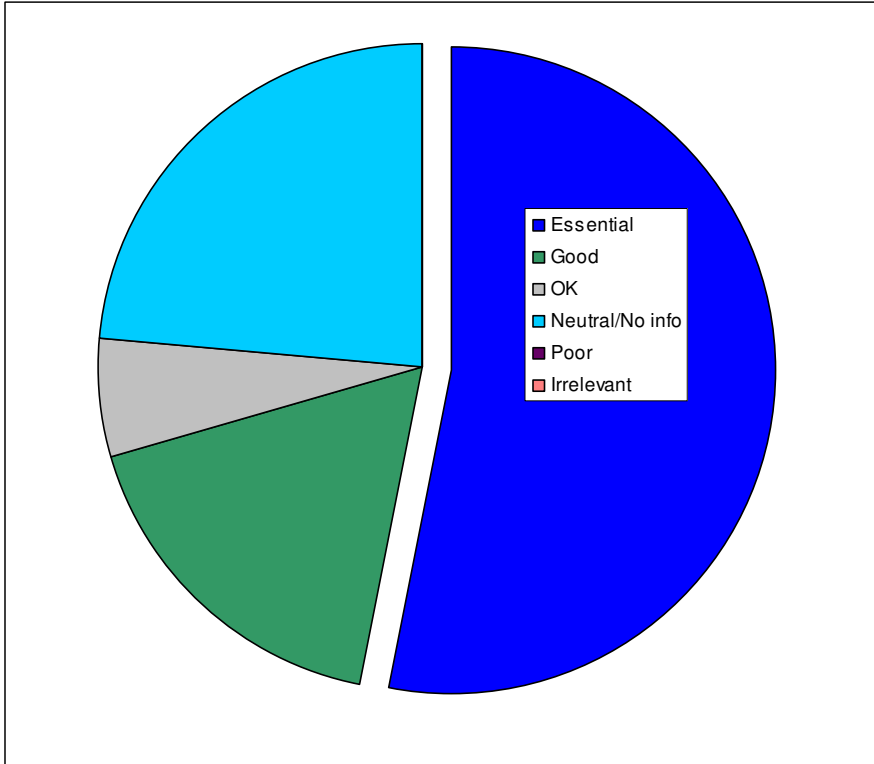


Usage of ERAQRA's online forum to date (total figure for May 2006 is a forecast) up 24.2% October 2006 to May 2007 over the previous period.

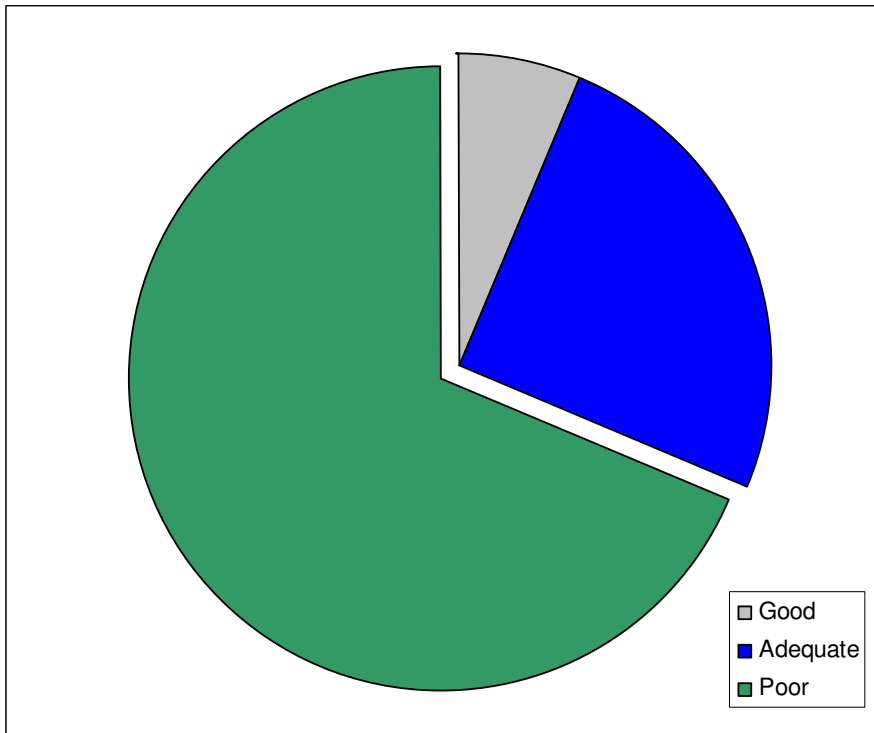


## Results to date of the eraqra.org survey

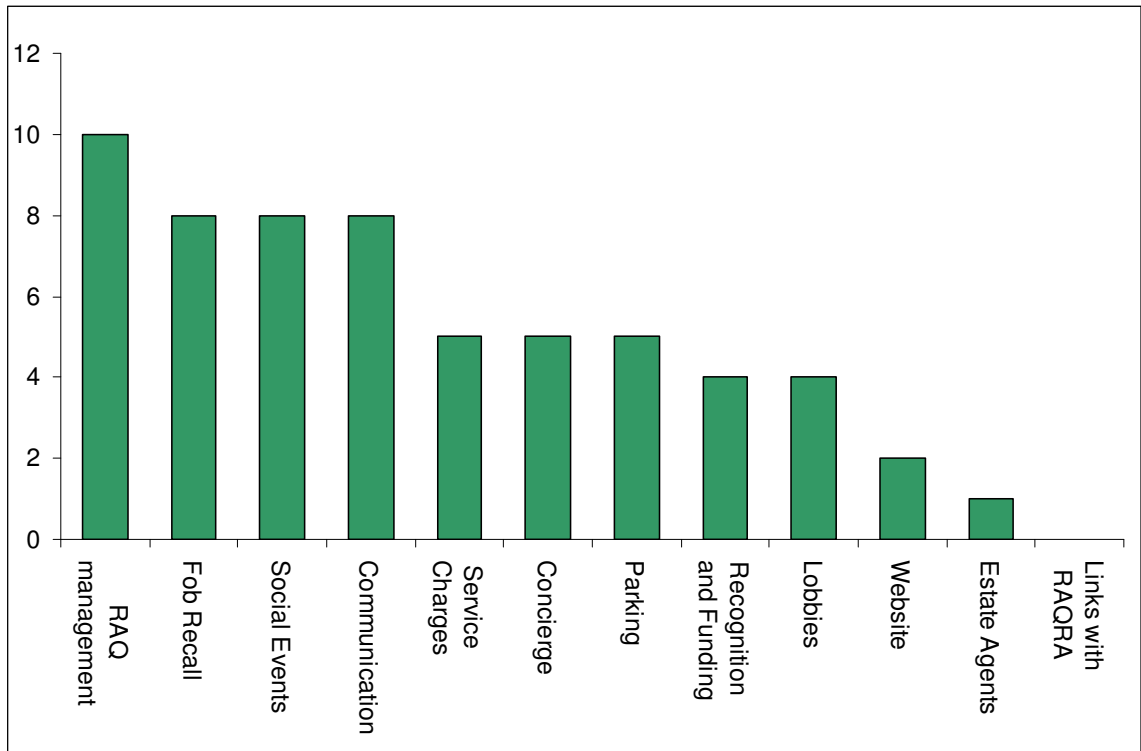
### 1) Residents' view of ERAQRA



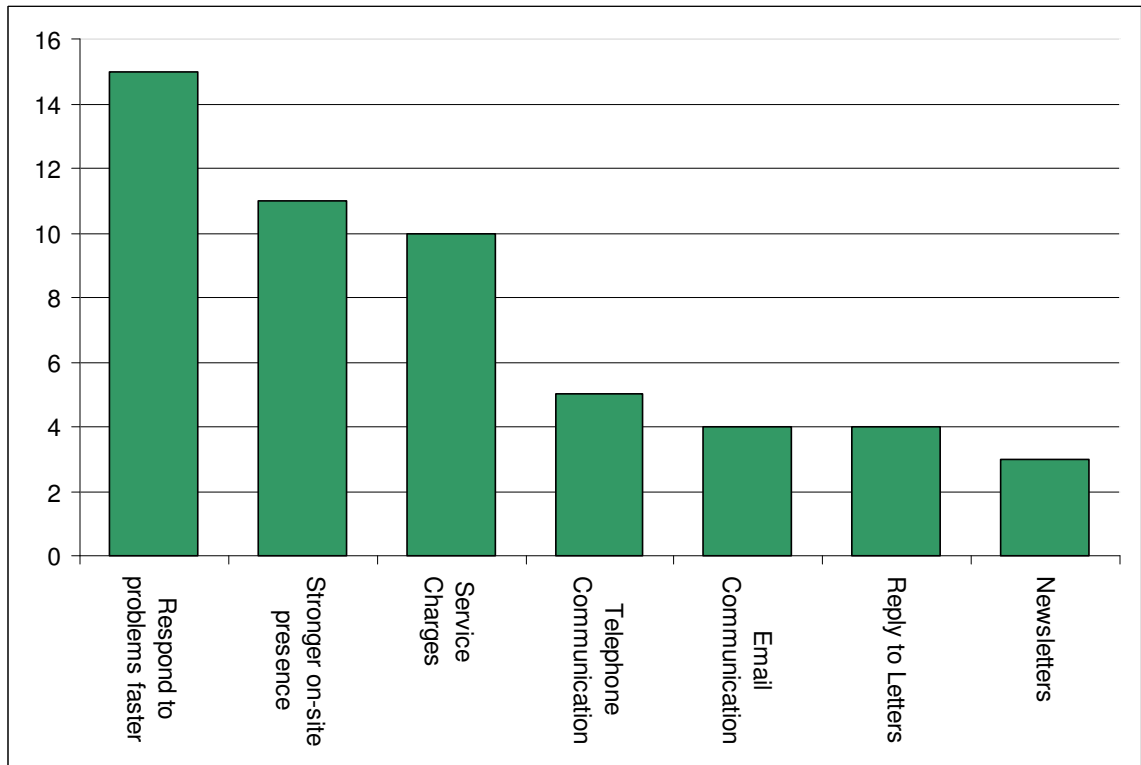
### 2) Residents' view of Solitaire;



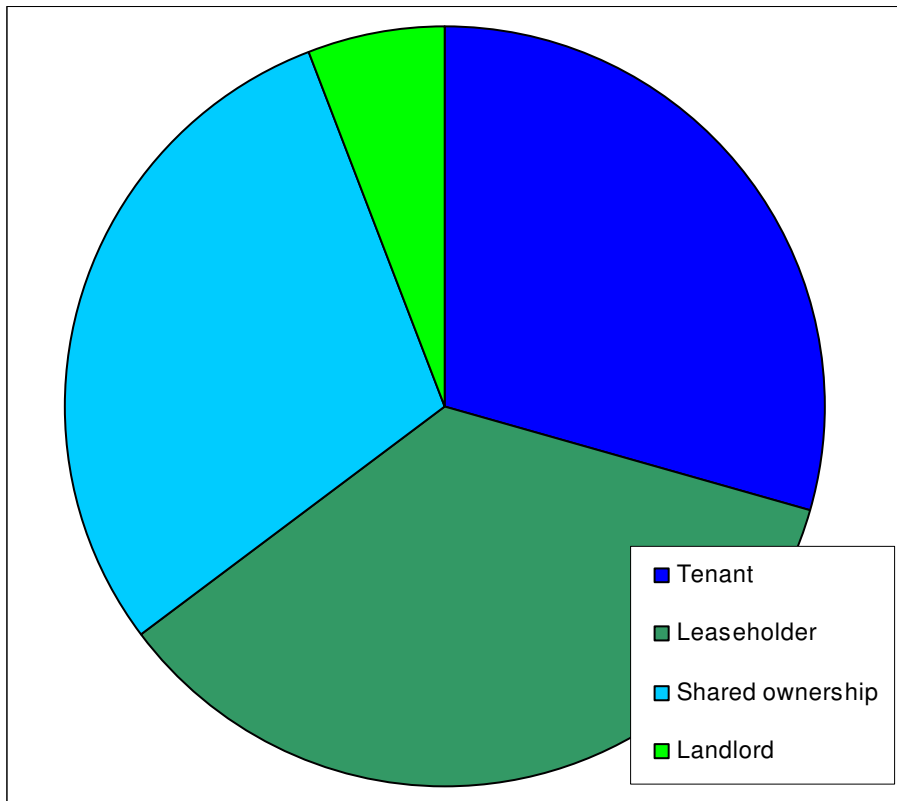
### 3) Residents' priorities for ERAQRA



### 4) Residents' priorities for Solitaire



## 5) Demographics of respondents



Average number of residents per apartment: 1.81  
(Extrapolated total 614 in 339 apartments)

Average age of residents: 33.5 years

Average length of residency at RAQ: 2.0 years

Proportion of residents who have been victims of crime at RAQ: 29.4%

Proportion complaining about anti-social behaviour at RAQ: 52.3%

Proportion leaving within 12 months: 17.8% (definitely) 41.2% (possibly)

Proportion of respondents who are ERAQRA members: 68.7%